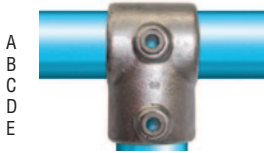


Minimum Order Value £30.00. Order your tube requirements from us as well as your tubeclamp fittings.

101 Short tee



104 Long tee



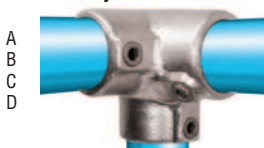
116 Corner with through the centre tube



119 Two socket cross with centre vertical tube



128 Three way 90° elbow



131 Base flange



132 Railing base flange



133 Stop ends (plastic)



135 Clamp on tee



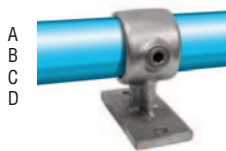
138 Gate eye



140 Gate hinge



143 Handrail bracket



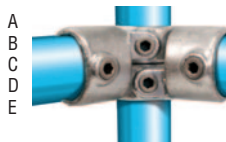
144 Railing side support vertical base



147 Internal swivel tee



148 Short tee swivel



149 Sleeve joint



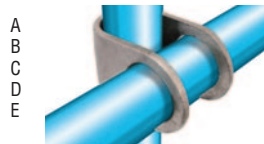
150 Internal joint



158 Four way cross width centre tube



160 Clamp on crossover



161 90° Crossover



165 Combination socket tee and crossover



167 Double swivel combination



170 Mesh panel clip



171 Mesh panel clip



173 Single swivel combination



176 Side outlet tee

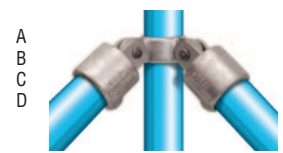


182 Hook

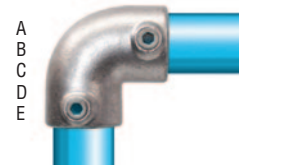


The most comprehensive range of fittings for five sizes of tube, which provide for a multitude of applications, such as handrailing, racking, shelving, building frames, temporary structures, walkways, market stalls, etc. The clamps are strong malleable iron castings hot dip galvanised smooth bright finish and fitted with industrial allen screws for secure locating. Fittings are available in a variety of tube sizes as listed alphabetically.

168 90° Corner swivel combination



125 90° Elbow



232 Keys



REF	To suit tube size O/D mm	PRICE
232ABC	26.9, 33.9, 42.4	£2.19
232DE	48.3 & 60.3	£3.36

233 Ratchet with bit



REF	To suit tube size O/D mm	PRICE
233	33.9 & 42.4 48.3 & 60.3	£73.82

TUBE DETAIL			
REF	O/D mm	I/D mm	PRICE per 6.47m
TUBE/A	26.9	20	£117.63
TUBE/B	33.9	25	£75.76
TUBE/C	42.4	32	£93.26
TUBE/D	48.3	40	£109.10
TUBE/E	60.3	50	£266.06

\*All tube ex-works prices  
Standard length 6.47m  
- also cut to length available

## • QUALITY:

Castings manufactured to the higher standards of BS6681 (ISO5922) galvanised to BS729 (ISO1461).

## • SERVICE:

If you are not sure our design service is at your disposal and will even design your project for you.